

## CONNECTING YOUR TABLET PC TO THE NETWORK FOR THE FIRST TIME

1. Connect your tablet PC to the Chatham network with the supplied network cable (Figure 1). Connect one end to the back of your PC (Figure 2) and the other end to a wall jack. **You MUST physically connect your tablet PC to the Chatham network for your initial logon.**

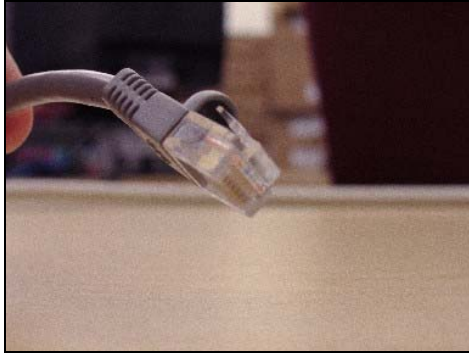


Figure 1



Figure 2

2. Turn on your PC.
3. When prompted, press <Ctrl><Alt><Del> and logon with the network credentials supplied to you by the helpdesk. Ensure that "CHATHAM" is selected for the domain.
4. Your initial logon will take from one to five minutes depending on the amount of network traffic.

## ENABLING YOUR WIRELESS CONNECTION


1. Ensure that you have completed the steps in the section "CONNECTING YOUR TABLET PC TO THE NETWORK FOR THE FIRST TIME".
2. Logon to your PC. Note: You do not need to be physically connected to the network at this time.
3. Ensure that wireless is enabled on your PC. A blue indicator light should be illuminated on the front, left of your PC (Figure 3).
4. If this indicator light is not lit, press the wireless button on the left side of your PC . This will toggle between enabling and disabling your wireless connection. You should now see a blue light on the left side of your tablet.



Figure 3

5. Within a few minutes, a "Wireless Network Connection" balloon will appear in the lower, right corner of your screen (Figure 4).

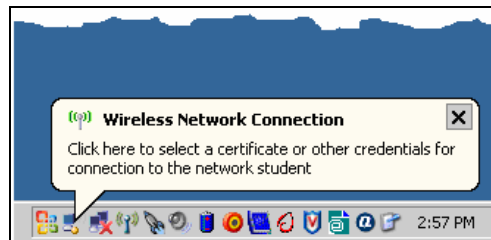


Figure 4

6. Click on this balloon. Logon with your network credentials in the logon dialog box. Ensure that “Chatham” is selected for the domain name.
7. In a few seconds you should be rewarded with the “Wireless Network Connection is now connected balloon (Figure 5).

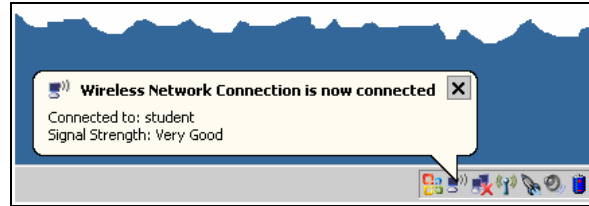


Figure 5

### Information concerning your tablet PC

Do NOT download large files while connected wirelessly. Use will be monitored periodically. Violators may be subject to loss of wireless privileges.

Turn off wireless when not in use. This will conserve battery life.

Turn off wireless when using your wired connection. Simultaneous use of wireless and wired connections “confuses” the tablet PC and may result in slow performance.

Do not loan your tablet PC or accessories to anyone. **All equipment is serialized and recorded.** You are responsible for loss or theft of your tablet PC and accessories.

Do not circumvent or disable anti-virus or anti-spyware applications. Any tablet PC without anti-virus or anti-spyware applications will be denied network privileges.